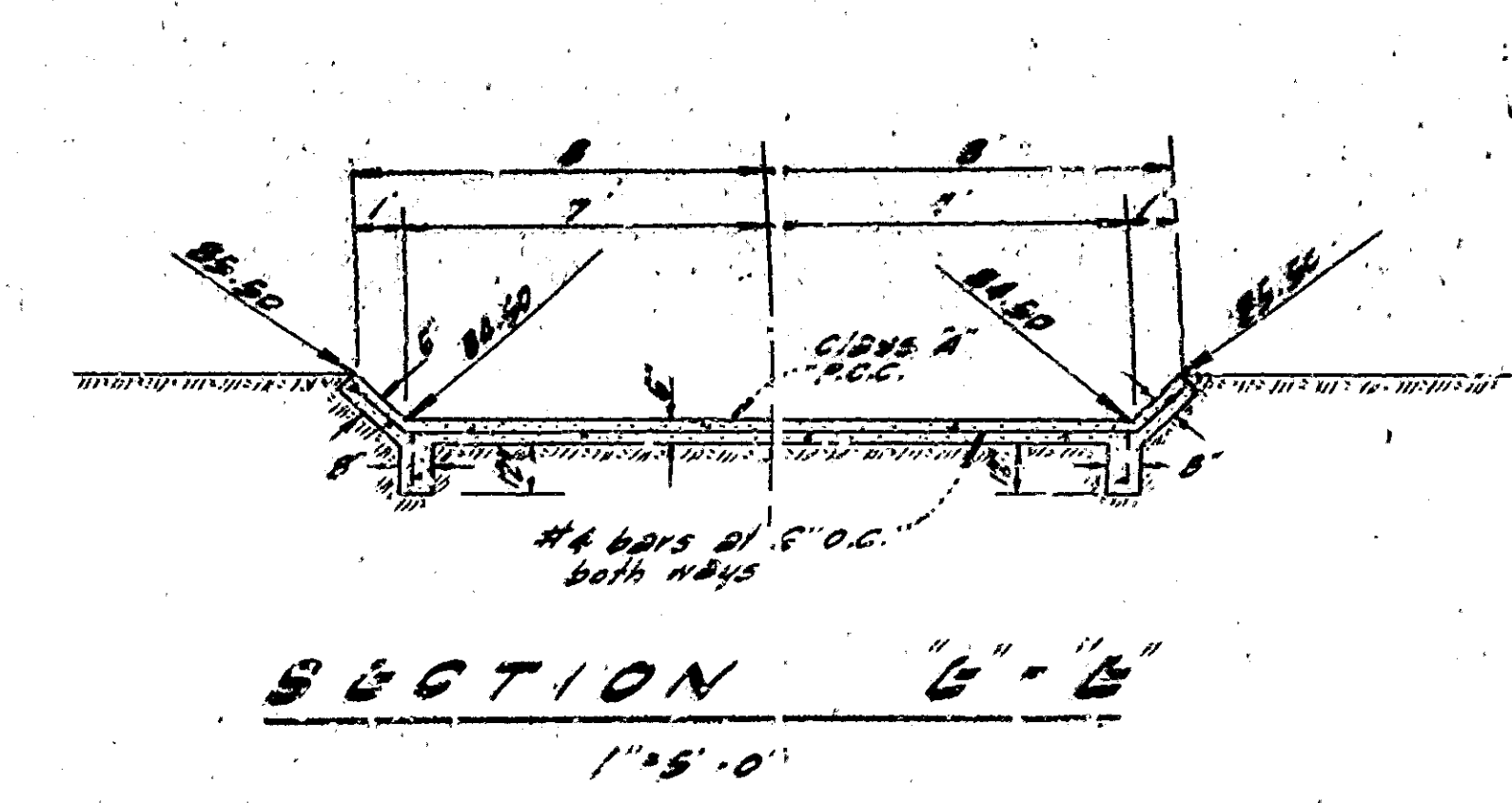
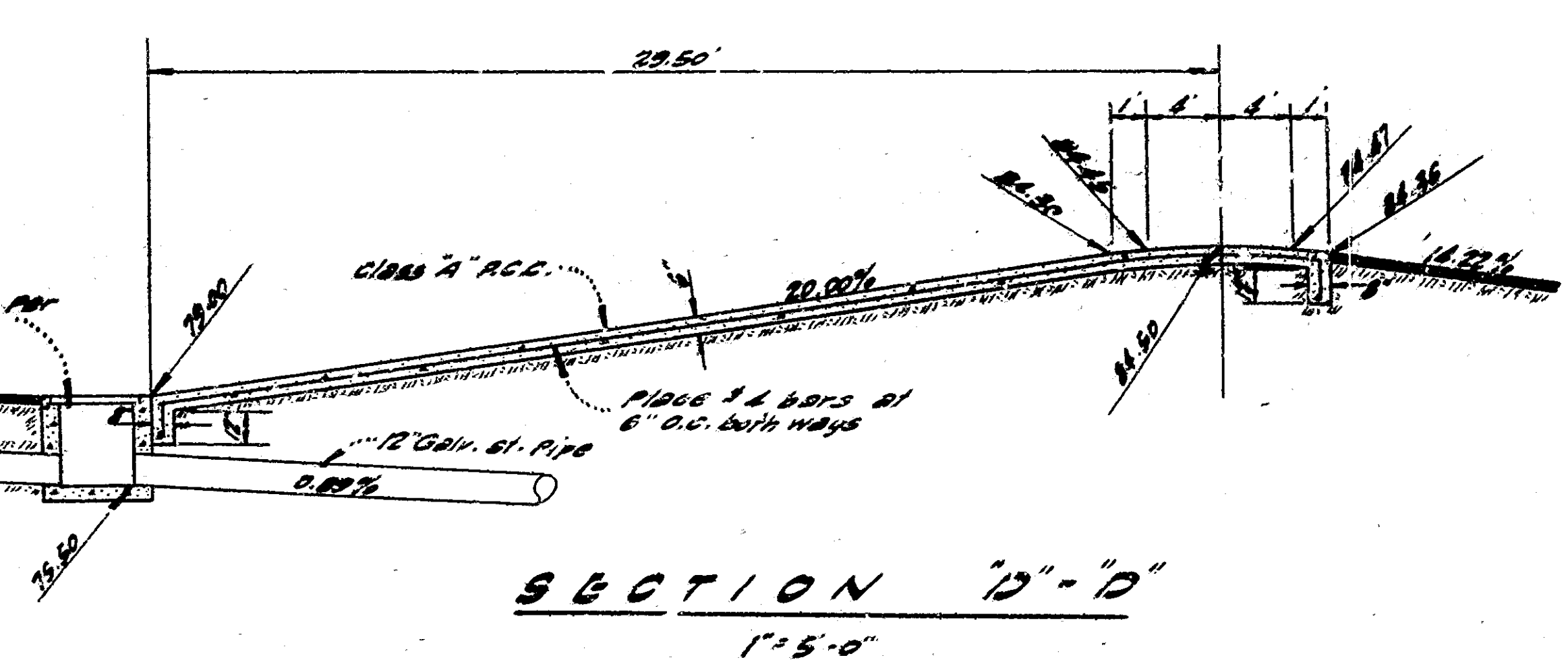
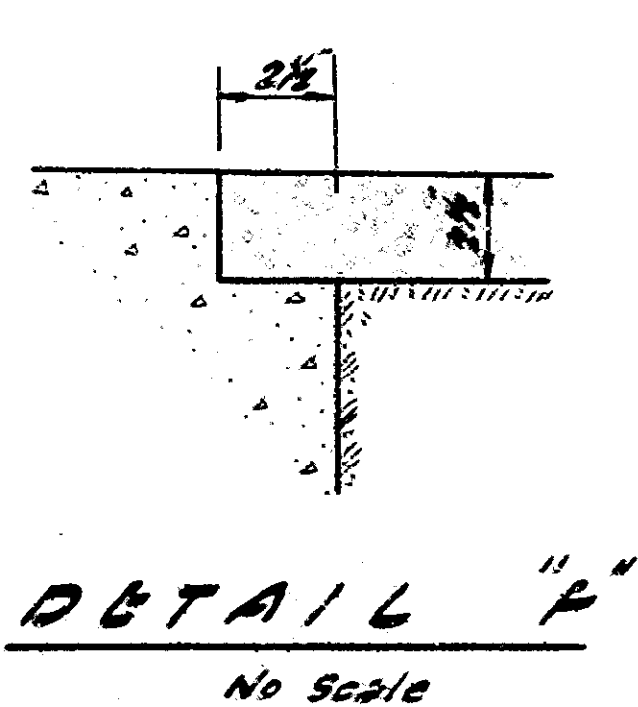
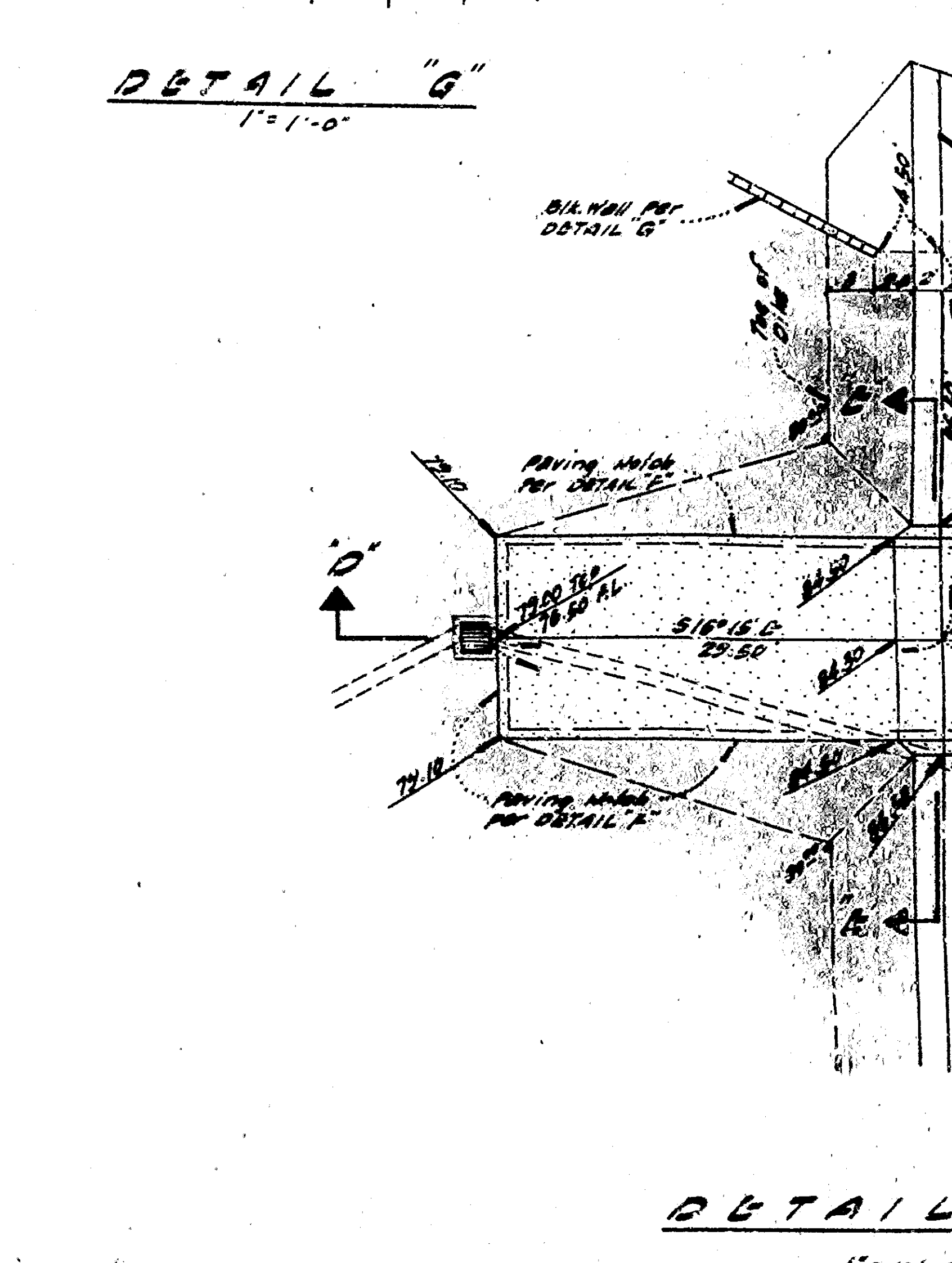
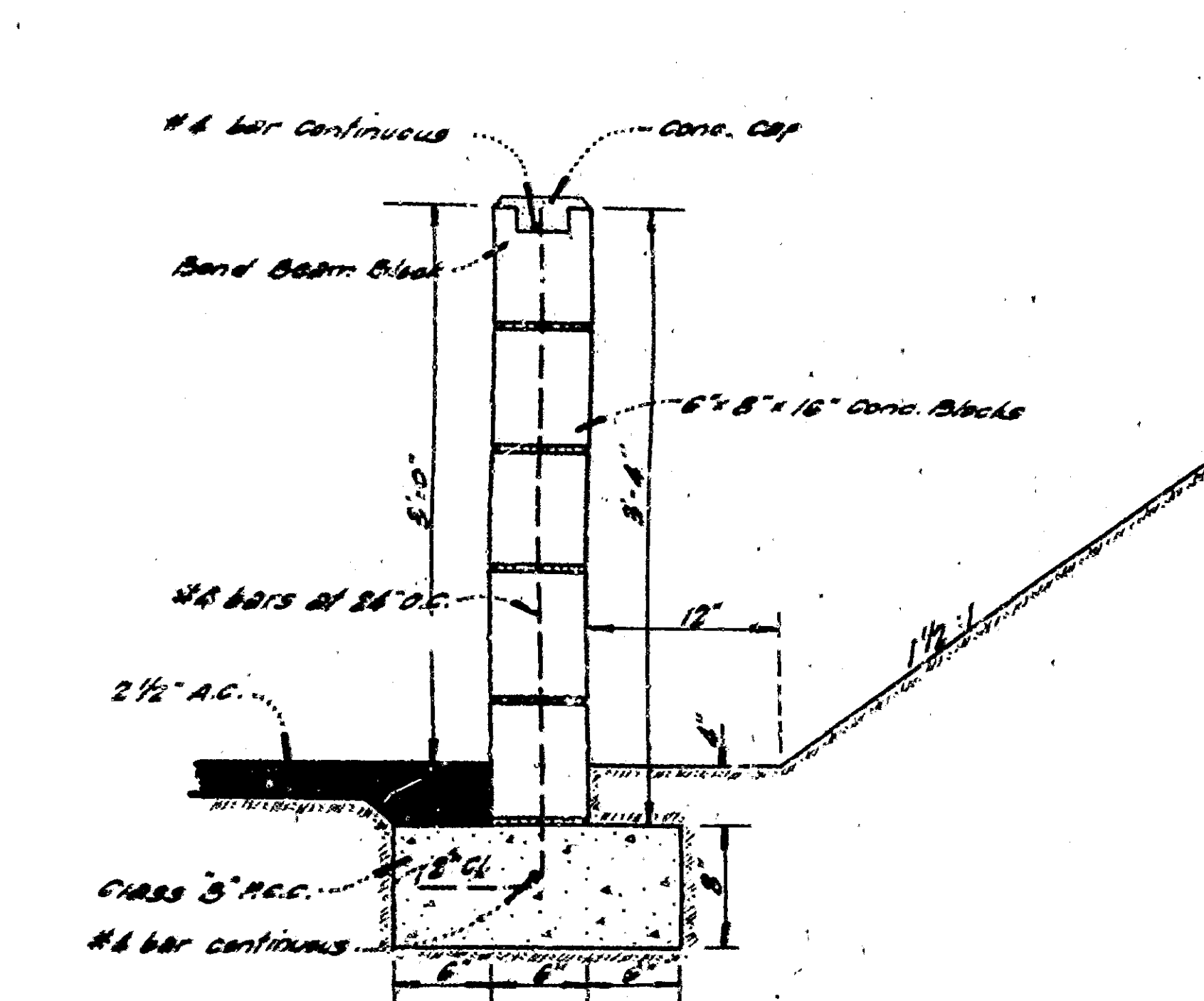
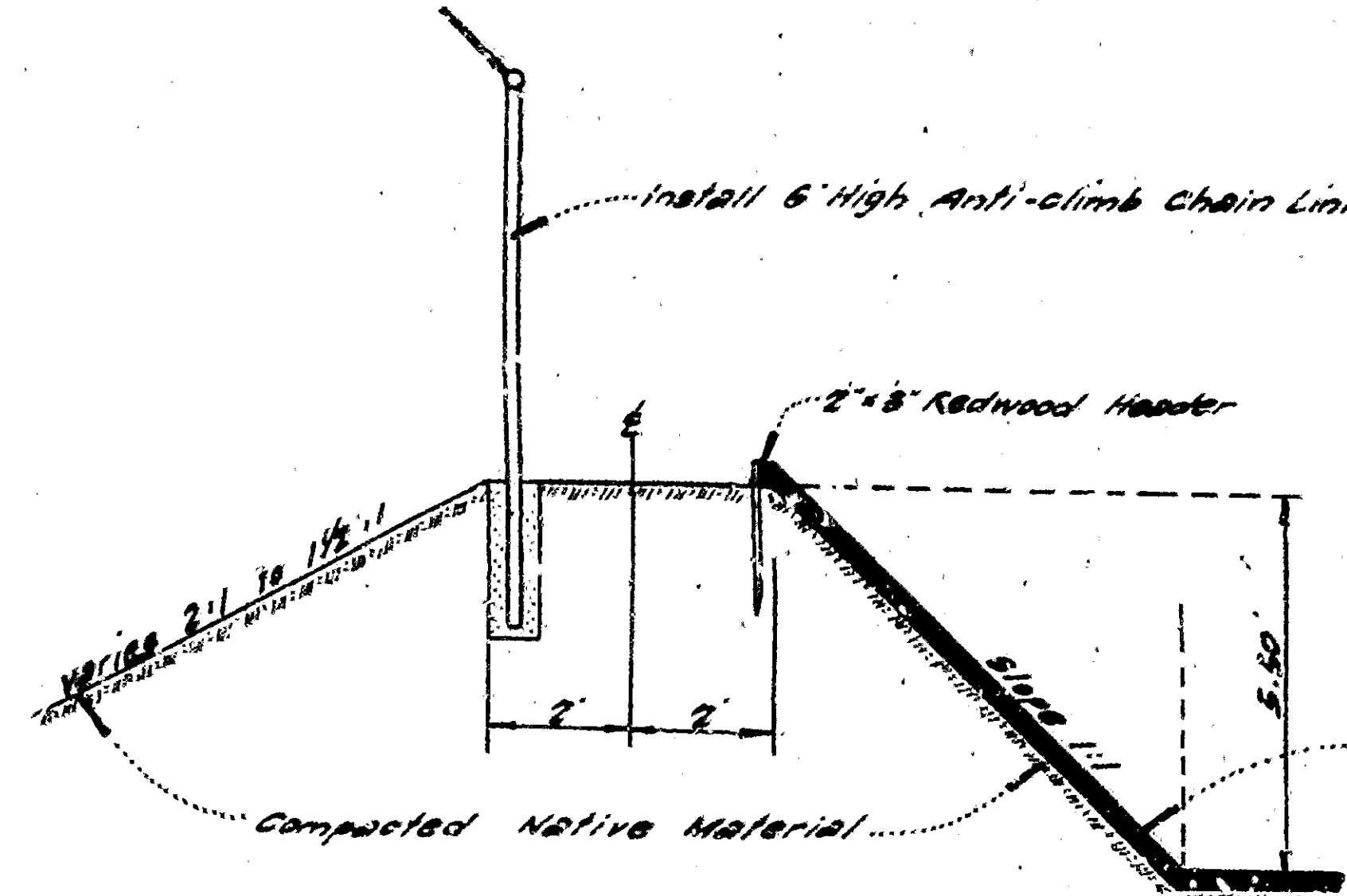
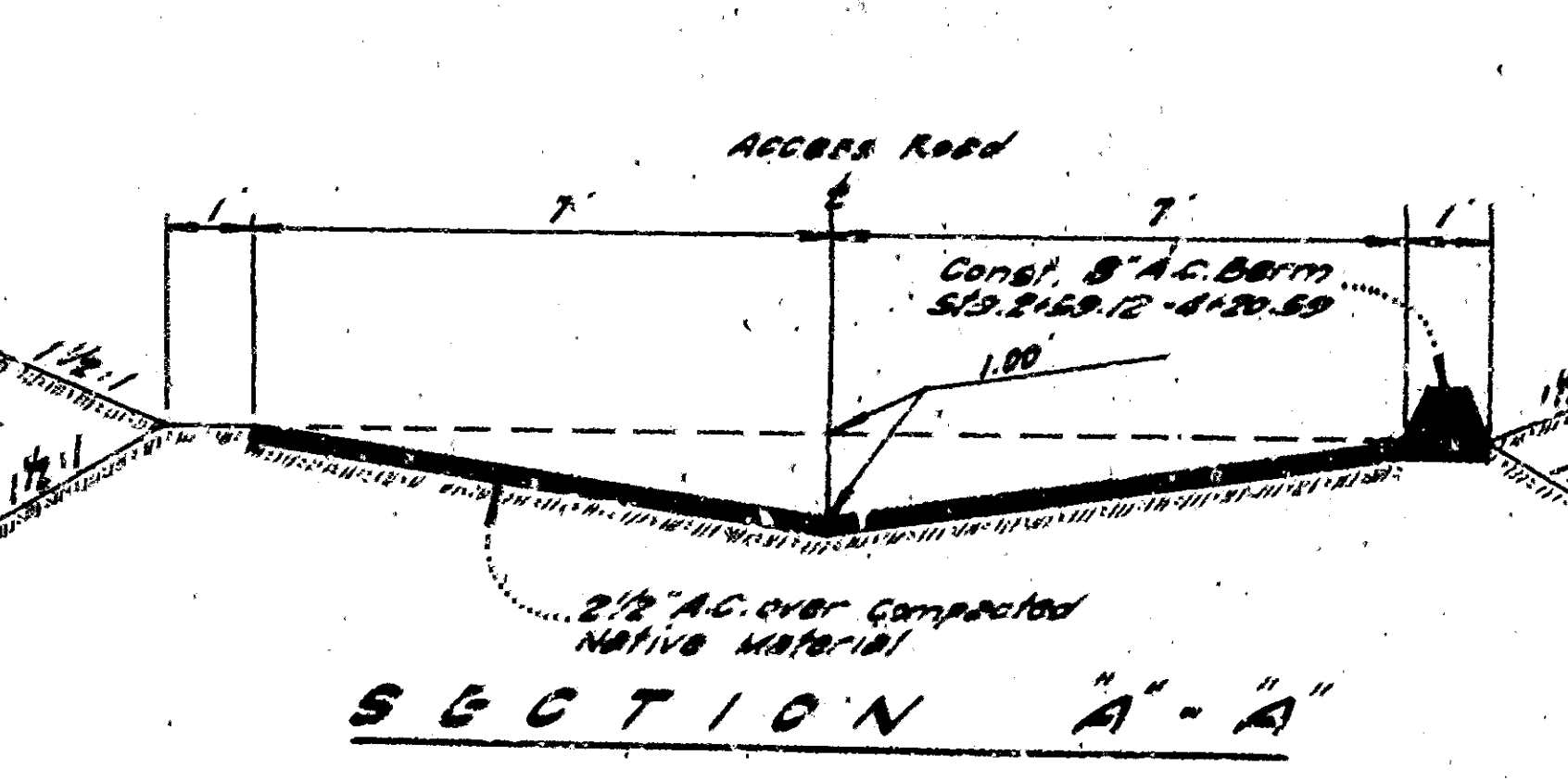
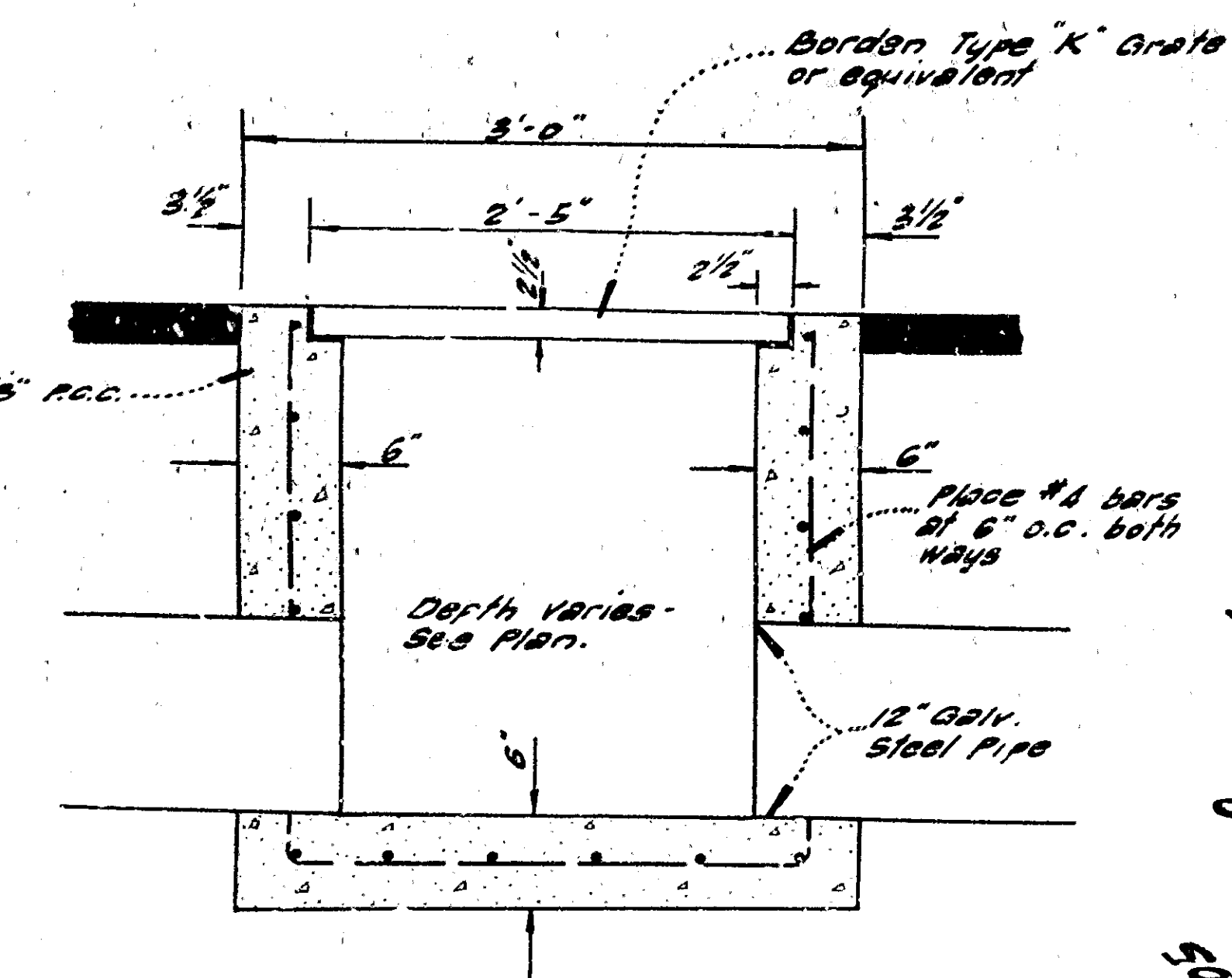
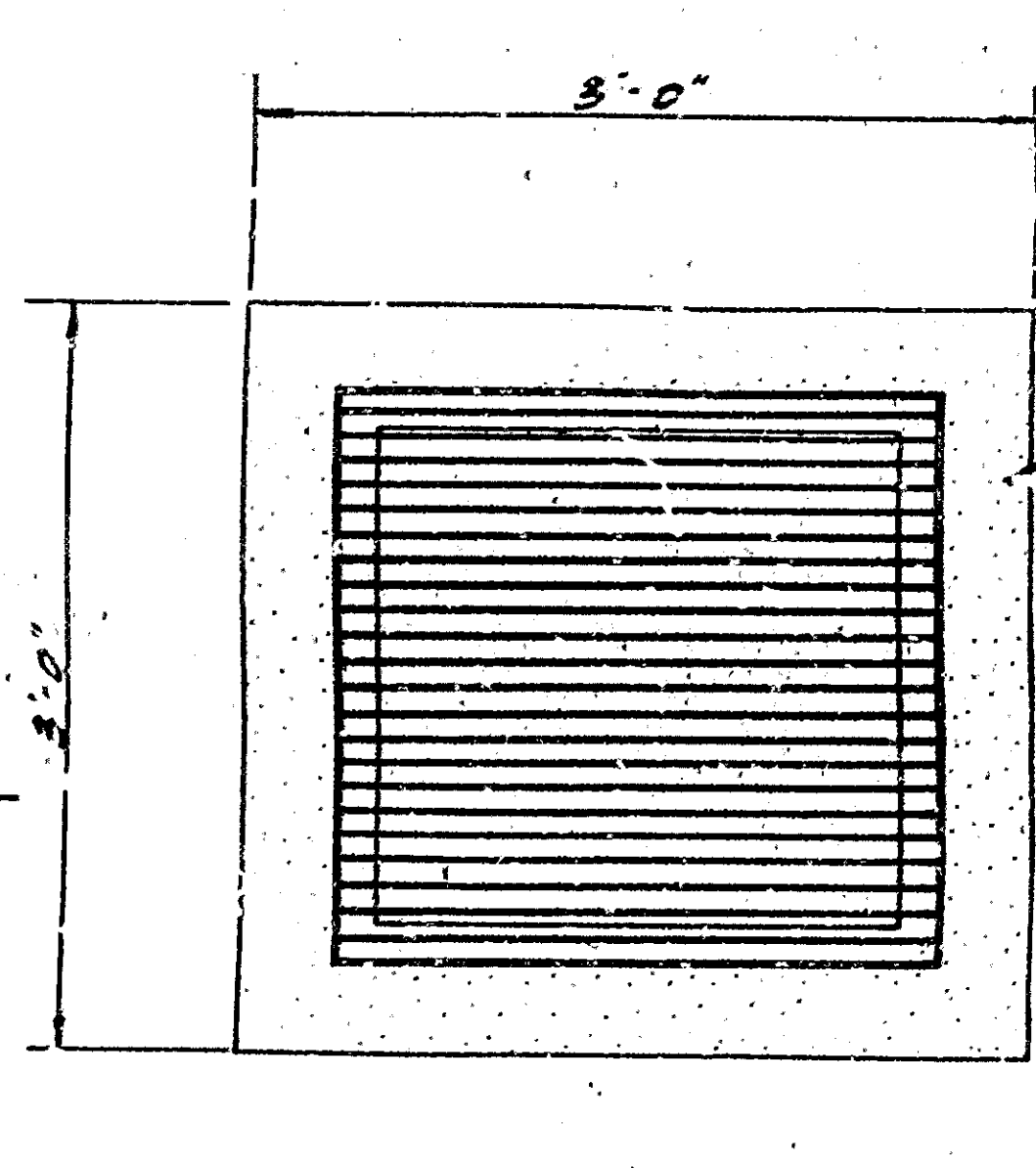
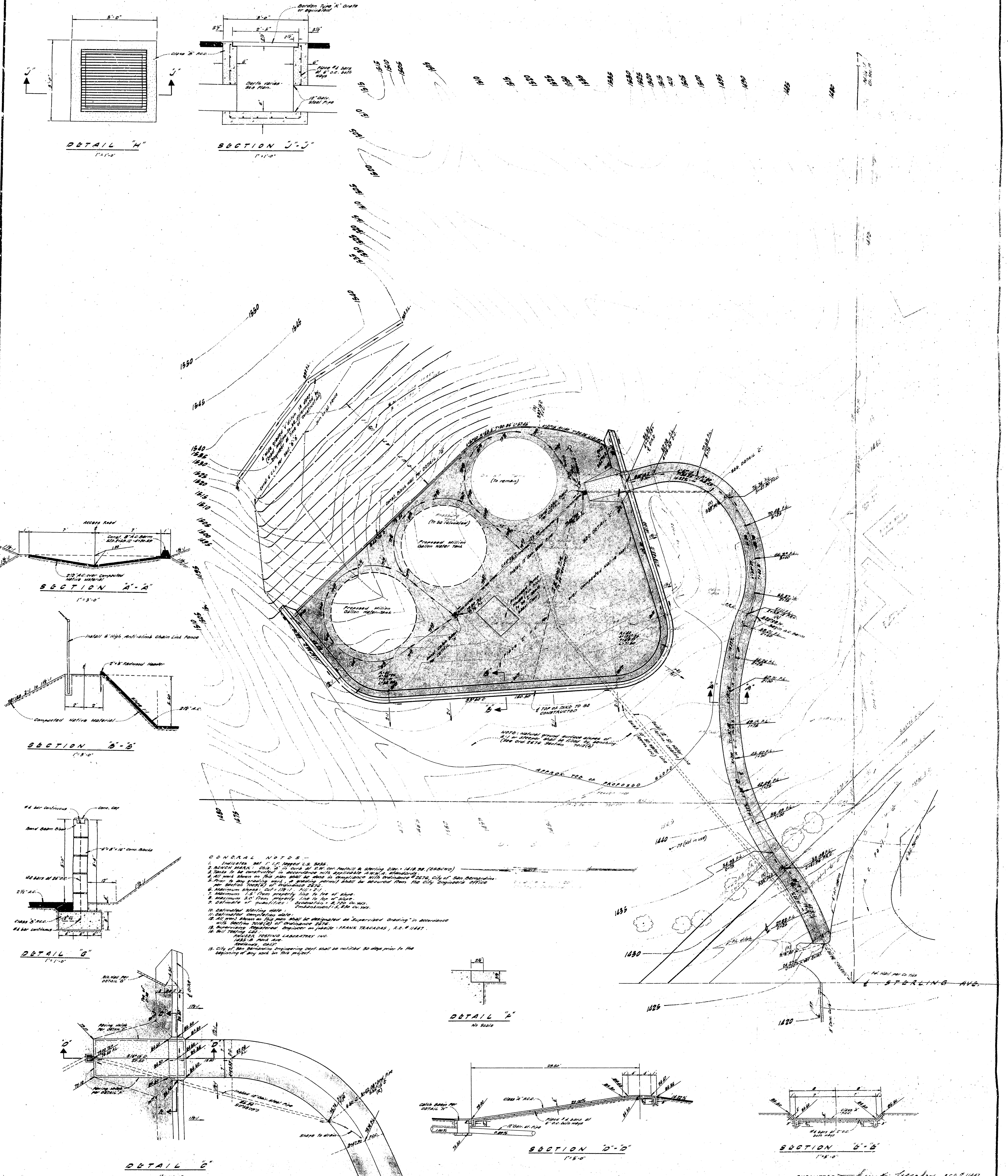


- GENERAL NOTES**
1. INDICATED ON 1/4\"/>

SUBMITTED BY *Frank Tracadas* A.C.C. # 11447  
 APPROVED BY *Dr. J. Miller* A.C.C. # 12058  
 CITY ENGINEER, City of San Bernardino July 1, 1960

DRAWING NO. <b>5473</b>	SHEET 1 OF 1	PROJECT <b>GARDNER, TEE, TRACADAS AND TROY</b> CIVIL ENGINEERING AND LAND SURVEYING 357 WEST 2ND STREET	DESIGNED FOR <b>EAST SAN BERNARDINO COUNTY WATER DIST.</b>	DATE REVISED	DRAWN BY <i>MHA</i> 5-27-60
				CHECKED BY <i>AT</i> 5-27-60	REVISED BY



**GENERAL NOTES**

1. INDICATED, BUT NOT SHOWN, SEE SHEET 5473.
2. BENCH MARK: CH. 2, 10' CORNER OF S.W. COR. INTERSECTION OF 2ND & 3RD STS. (GRANITE)
3. ELEVATION TO BE SHOWN ON THIS PLAN SHALL BE SHOWN AS DISTANCE FROM BENCH MARK #2710, CITY OF SAN BERNARDINO.
4. ALL WORK SHOWN ON THIS PLAN SHALL BE SHOWN AS DISTANCE FROM THE CITY ENGINEER'S OFFICE.
5. PERMITS TO BE OBTAINED FROM THE CITY ENGINEER'S OFFICE.
6. MAXIMUM SLOPE: 1:1 (30% GRADE)
7. MAXIMUM SLOPE: 1:1 (30% GRADE)
8. MAXIMUM SLOPE: 1:1 (30% GRADE)
9. ESTIMATE OF EARTHWORK: 1,500 cu. yds.
10. ESTIMATE OF PAVING: 1,500 sq. yds.
11. ESTIMATE OF CONCRETE: 1,500 cu. yds.
12. ALL WORK SHALL BE UNDER THE SUPERVISION OF A LICENSED SURVEYOR.
13. SUPERVISOR: JAMES W. TRACADAS, R.E. #11447.
14. SOIL TESTING LAB: TESTING LABORATORY, INC., 1425 B ROAD, PASADENA, CALIF.
15. CITY OF SAN BERNARDINO ENGINEERING DEPT. SHALL BE NOTIFIED 30 DAYS PRIOR TO THE BEGINNING OF ANY WORK ON THIS PROJECT.

SUBMITTED BY: *James W. Tracad* R.C.D. #11447  
 APPROVED BY: *James W. Tracad* R.C.D. #11447  
 CITY ENGINEER, CITY OF SAN BERNARDINO - July 1, 1960

DRAWING NO. <b>5473</b>	SHEET 1 OF 1	PROJECT <b>GARDNER, TEE, TRACADAS AND TROY</b> CIVIL ENGINEERING AND LAND SURVEYING 357 WEST 2ND STREET	DESIGNED FOR: <b>EAST SAN BERNARDINO COUNTY WATER DIST.</b>	DATE REVISED	DRAWN BY: <i>MHA</i> 5-27-60
				CHECKED BY: <i>AT</i> 5-27-60	REVISED BY: